

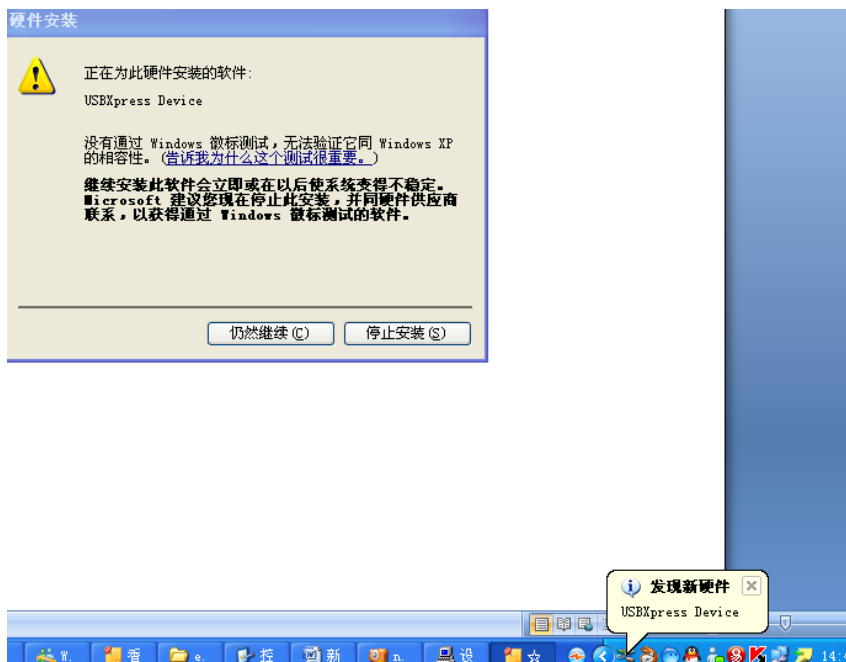
The installing and using of ID programmer

1. First install the ID software, GP2012(400v1.26) ID programmer setup.exe.
2. After install finished, then connect ID programmer to PC.



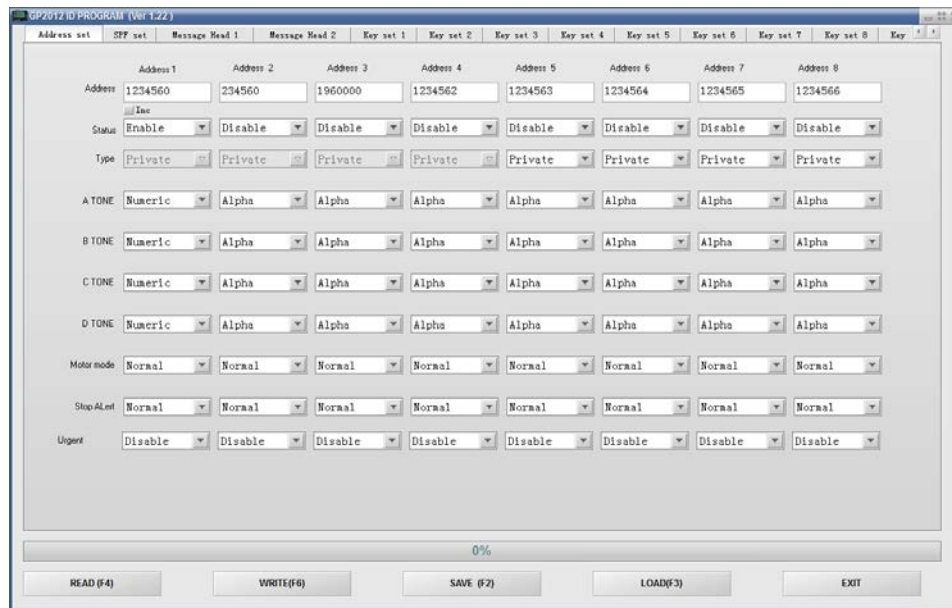
3. The PC detected the ID programmer and show prompt to install setup software.

As follow photo:



Then assign the driver to installed directory, If 32bit system , using /86 , if 64 bit system, using /64

4. After hardware succeed, run ID program software.



5. If the software running without no finding ID programming prompt.

You can insert the ID programmer to the USB port of pager. And read or write.

6. If prompt not finding ID programmer or read or write cannot work.

Then quit software, unconnected ID programmer with PC, reconnected again. Then run software to try.